

# DATASHEET

**RS-HY7015M4QT-2**  
UHF RFID Dry Inlay

## KEY DATA

Chip: Monza M4QT  
Antenna Size: 70 × 15 mm  
Format: Dry Inlay, Wet Inlay,  
White Paper

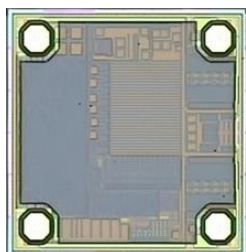


**RS-HY7015M4QT-2**

## APPLICATION

Supply Chain & Logistics Management  
Warehouse Management

## OVERVIEW

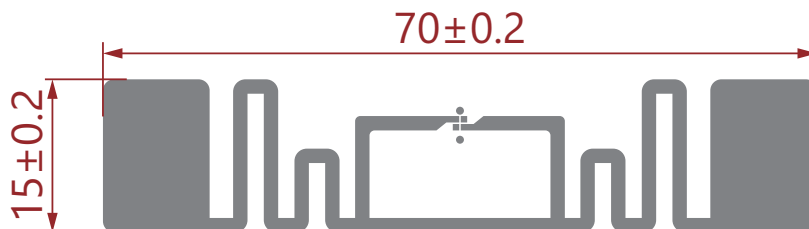


RS-HY7015M4QT-2 UHF RFID Dry Inlay is built with Impinj Monza 4QT.

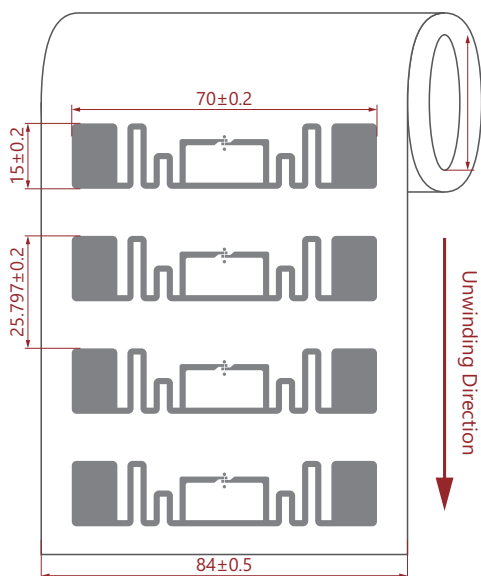
Monza 4QT tag chips offer 512 bits of user memory, 128 bits of EPC memory, block permalock capability, a serialized TID, and True3D antenna support. The extended User memory options support applications where users cannot count on a database connection. The 512 bits of User memory enables a portable, but private database to travel with the tag.

Monza 4QT also provides Impinj's patent-pending QT technology, which protects data confidentiality and consumer privacy.

## DIMENSIONS

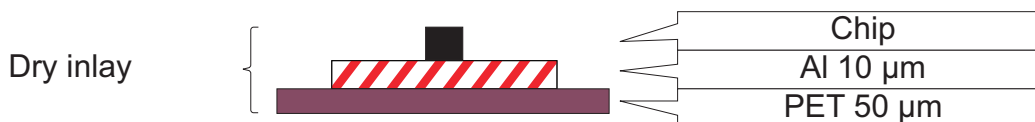


## ORIENTATION



Physical characteristics	Dimensions
Antenna size	70 × 15 mm
Inlay pitch	25.797 mm
PET width	84 mm
Dry Inlay thickness	Al 10 μm + PET 50 μm
Reel detail	Web width: 84 ± 1.0 mm Inner core diameter: 3" (76.2 mm) Core thickness: 5 ± 2 mm

## STRUCTURE



## ELECTRICAL CHARACTERISTICS

Item		Description
Manufacture/IC		Impinj Monza 4QT
Base Material		PET
Antenna		Etched Al (10 μm) + PET (50 μm)
Protocol		RAIN RFID / ISO 18000-6C and EPC global Gen2v2 Compliant
Memory	User	512 bits
	TID	48 bits
	EPC	128 bits
	Password	Kill Password - 32 bits
Access Password - 32 bits		
Frequency		860 ~ 960 MHz
Operating Mode		Passive
IC Life		100,000 Programming cycles, 50years data retention
ESD Voltage Immunity		Max. 2000 V

## ENVIRONMENTAL REQUIREMENT

- Operating Temperature/Humidity: -5°C ~ 60°C / 20% ~ 80% RH
- Storage Temperature/Humidity: 20°C ~ 30°C / 20% ~ 60% RH
- Shelf Life: From the date of manufacture, 1 year in anti-static bag at 20°C ~ 30°C / 20% ~ 60% RH, and avoid direct sunlight exposure

## PACKAGING

Reference Packing: Static-free bag with zipper; 10000 ± 100 Pcs/roll, 4 rolls/ctn (Actual Qty as per Shipping Mark).

